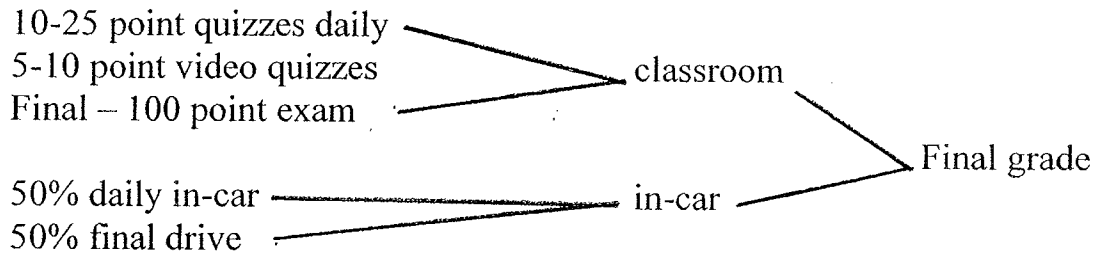


CLASSROOM DAILY SCHEDULE

DAY # 1

1. Assign seats
2. Classroom rules
 - a. No strapless scandals or flip flops when driving
 - b. No pencils in your back pocket in the car
 - c. Park personal cars in the west parking lot
 - d. No food, pop or juice in the classroom (only water)
 - e. No caps in the classroom & turn off cell phones
 - f. Bring a #2 pencil and textbook to class every day**
 - g. Change cars every 4 days
 - h. During breaks stay in the lunchroom or restrooms (stay out of the hallways)
 - i. Be on time for driving. If late wait in the east parking lot.

3. Grading



4. Qualifications for 90 day waiver
 - a. 80% work in the classroom (320 points and 80% on final exam)
 - b. 80% passing grade on the final driver test
5. Attendance – must be present for all sessions (we allow one make-up for a legitimate excuse – must call 882-6316 if absent and make-up class missed)
6. Distribute course outline and grading form
7. Distribute books
8. Read (skim & scan) Chapter 3
9. Chapter activity (work together – 30 minutes)
10. Review Chapter 3

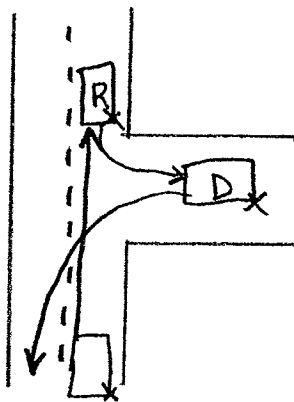
11. Break (15 minutes)

12. Video # 1 Attitude

13. In-car instructions for Day # 1 and Day # 2

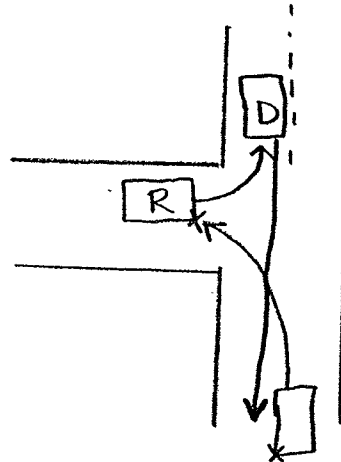
- a. Preparing to drive – 1) key, 2) seat, 3) mirror, 4) seat belt
- b. Hand position – 10 & 2 or 9 & 3
- c. Signal ½ block in advance
- d. Hand over hand or push-pull steering
- e. Quick glance technique – look left, right, and left again – 15 mph at a blind intersection
- f. Right turn – 5-8 MPH – 5' from the curb – begin turning at the curb
- g. Left turn – 10-12 MPH – left fender close to the center line – begin turning just before the front bumper reaches the center of the street
- h. Cover brake when going through an intersection
- i. Stop before exiting a parking lot
- j. Drive through cones forward and backward (Day # 1)
- k. Backing straight – R hand over the passenger headrest and L hand at 12 o'clock

Driveway on right



Careful when Backing

Driveway on left



Back into nearest lane parallel & straighten wheels

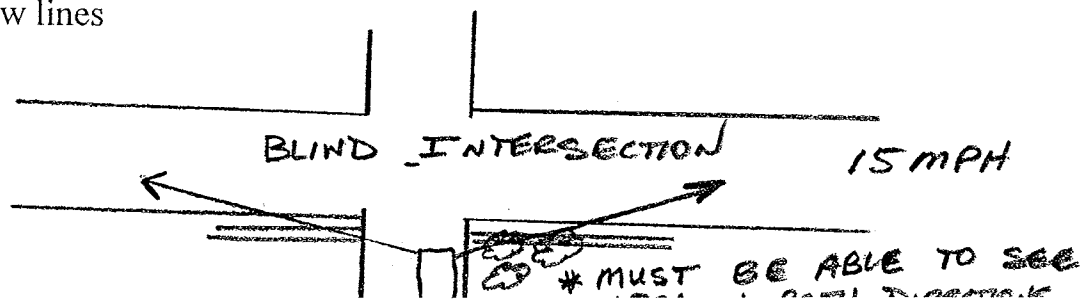
14. Read and complete Chapter 4 activity

15. Assignment for Day # 2 – Read Chapter 2 – Quiz over Chapter 2

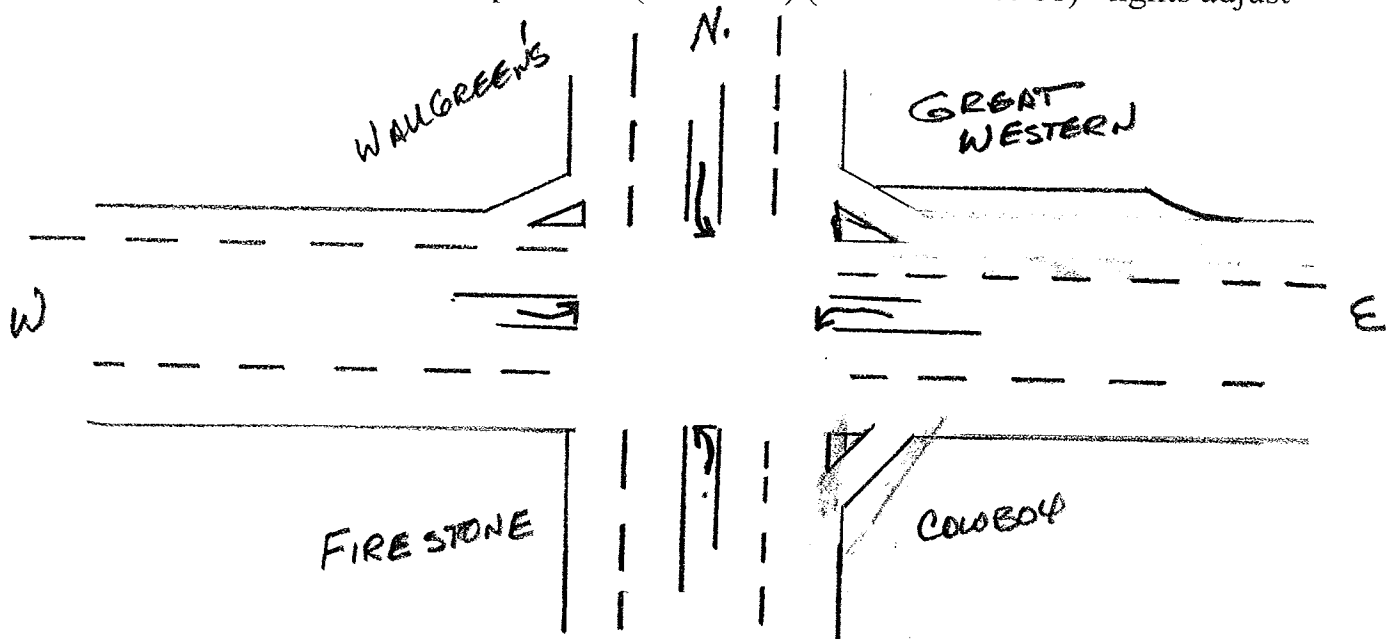
Remind students to bring book and pencil daily, wear proper shoes, and report to class on time tomorrow

CLASSROOM DAY # 2

1. In-Car Day # 3
 - a. Uphill parking
 - 1) Signal & pull over 9-12" from the curb
 - 2) Shift to neutral
 - 3) Turn steering wheel **all the way or 2 turns** away from the curb
 - 4) Shift to neutral & let the car roll back until it touches the curb
 - 5) Shift to park and set the parking brake
 - 6) To exit shift to drive & **SMOG** (signal, mirrors, blind, & go)
 - b. Downhill parking
 - 1) Signal and pull over 9-12" from the curb
 - 2) Shift to neutral
 - 3) Turn wheels **2 turns** toward the curb
 - 4) Let the car roll forward until tires touch the curb- shift to park and set the parking brake
 - 5) Shift to R – back out until car is again parallel with the curb
countersteer **2 turns** or until straight again
 - 6) To exit shift to drive & **SMOG**
 - c. U-turn – signal and pull- over 5' from the curb at the end of the street and stop. Check traffic 500' in all four directions. Begin making a right turn. Half way through the turn signal left and continue turning checking traffic in all four directions
 - d. Speed limits – Residential –25; hwy 212–35; hwy 81-30; hwy 20-35; Toward the lake on hwy 20-55; by the lake-45; most SD highways-65; SD interstate hwy-75, downtown business district-20; school zones-15; residential blind intersection-15
 - e. Right on red – turn right on red light after complete stop and yield
 - f. RR crossing – caution and look both ways before crossing
 - g. Right-of-way – the right-of-way is **given to you, you do not take it** – relinquish right-of-way when turning left
 - h. Lane change – check traffic & SMOG & use touch tone or finger touch
 - i. Downtown Kemp. Ave. – light are synchronized
 - j. Traffic lights – solid red, solid yellow, flashing red, & flashing yellow
 - k. Roadway markings – solid and broken white lines & solid and broken yellow lines



- l. Left turn on multiple lanes (212 & 81) (3rd Ave. N. & 81) –lights adjust

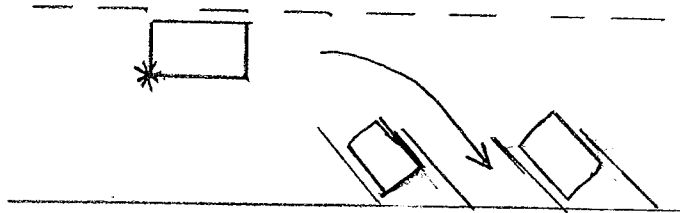


- m. 4 way stop signs – 3rd Ave. N & 3rd St. W.; Arrow Ave. & 11th St. E.; 1st Ave. N. & 11th St. E.; W. Kemp Ave. & 3rd St. W.; 3rd Ave. N. & Broadway; 14th Ave. N. & N. Maple; 2nd Ave. S. & S. Maple; 6th Ave. NE & 13th St. E
- n. 3-way stop signs – Lincoln School & 13th St. E. and Mellette School and 7th Ave. N.
- o. Following distance – recommend 3-4 seconds for inexperienced drivers
2. Chapter 2 activity (30 min.)
 3. Review Chapter 2 activity – (15 min.)
 4. Break (15 min.)
 5. Video – “Practicing Basic Control Tasks Behind the Wheel”
 6. Quiz over video
 7. Seat Belt Video – “Seat Belts Save Lives” (11 min.)
 8. Assignment for Day # 3 is Chapter 5 and speaker police department

CLASSROOM DAY # 3

1. Speaker – Police Department (9:00 – 10:00 AM and 12:45-1:45 PM)

Note: Ask students to write 3 questions for Officer Seifel – 2 pts. Ex. Credit (break 15 min.)



2. In-car Day # 4 (15 min.)

- a. Angle parking

- 1) Signal early – flash brake lights to warn drivers behind
- 2) Drive close to the center line and turn when you can see down the stall line
- 3) Watch clearance with left front bumper and right rear fender
- 4) Pull in all the way to the curb
- 5) Straighten wheels just before touching the curb or when centered in the space
- 6) Back out all the way until parallel with the center line
- 7) Watch for white back up lights and allow someone to back out if no one is directly behind you
- 8) Don't park near intersection on heavily traveled streets
- 9) Illegal to park on the left side of the street in a res. Area

- b. One-way streets

- 1) Kemp Ave. and 1st Ave. South
- 2) Explain junction
at Kemp Ave. W. & 3rd St. W. and 3rd St. W. & 1st Ave. S.

- c. Lane change

- 1) Check traffic ahead and behind
- 2) **SMOG** (use touch tone to signal)
- 3) Accelerate into the lane change
- 4) Turn signal "on" in busy traffic to alert drivers of your desire to change lanes

- d. Left turns – go $\frac{1}{2}$ way out into the intersection with front wheels kept straight
- e. Through streets in Watertown

Avenues

Kemp Ave.
4th Ave. South
1st Ave. North
10th Ave. North
3rd Ave. North
14th Ave. North

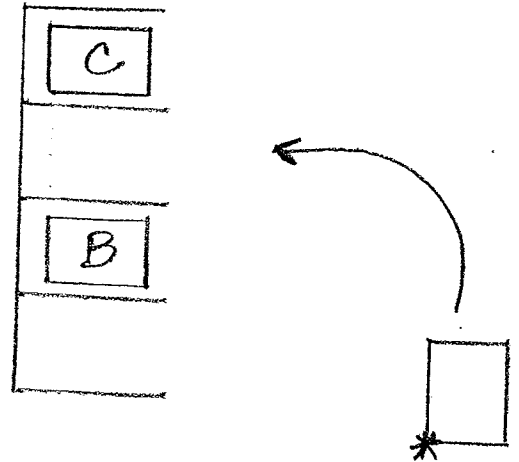
Streets

Broadway
Maple
11th St. E.
3rd St. W.
19th St. E

- 3. Activity Chapter 5 “Natural Laws & Vehicle Control” (30 min.)
- 4. Review Activity (15 min.)
- 5. Quiz Chapter 5 (15 min.)
- 6. Assignment for Day # 4 is read Chapter 6 “Basic Car Maneuvers”

CLASSROOM DAY # 4

Note: Recommendation is to stay to the right in a parking lot and park to the left.



1. In-car Day # 5
 - a. Perpendicular parking (10 min.)
 - 1) Stay 8' or as far away as possible from the stall
 - 2) Begin turning when the front bumper lines up with the right taillight of the vehicle on the left (car "B" which is the vehicle just prior to the open stall)
 - 3) Keep the leading bumper close to the adjoining vehicle on the outside (car "C") until 2/3 of the way into the space, then turn toward the center of the space and straighten the wheels
 - 4) Watch right front bumper and left rear fender of own vehicle when entering and leaving a parking stall
 - 5) Back straight until your right front bumper is even with the rear of the car to the right (car "C") then begin turning left
 - 6) Back until parallel and straighten wheels prior to shifting to drive and moving forward
2. Activity Chapter 6 (30 min.)
3. Review Chapter 6 Activity (10-15 min.)
4. Exam Chapter 6 (15 min.)
5. Break (15 min.)
6. Video # 3 "Taking Care of It" (12-15 min.)
7. Quiz video # 3 (10 min.)
8. Video "Real World Driver" (30min.)
9. Video "Sharing Your Tears of Hope"
10. Assignment for Day # 5 read Chapter 7 "Negotiating Intersections"
11. New car tomorrow

CLASSROOM DAY # 5

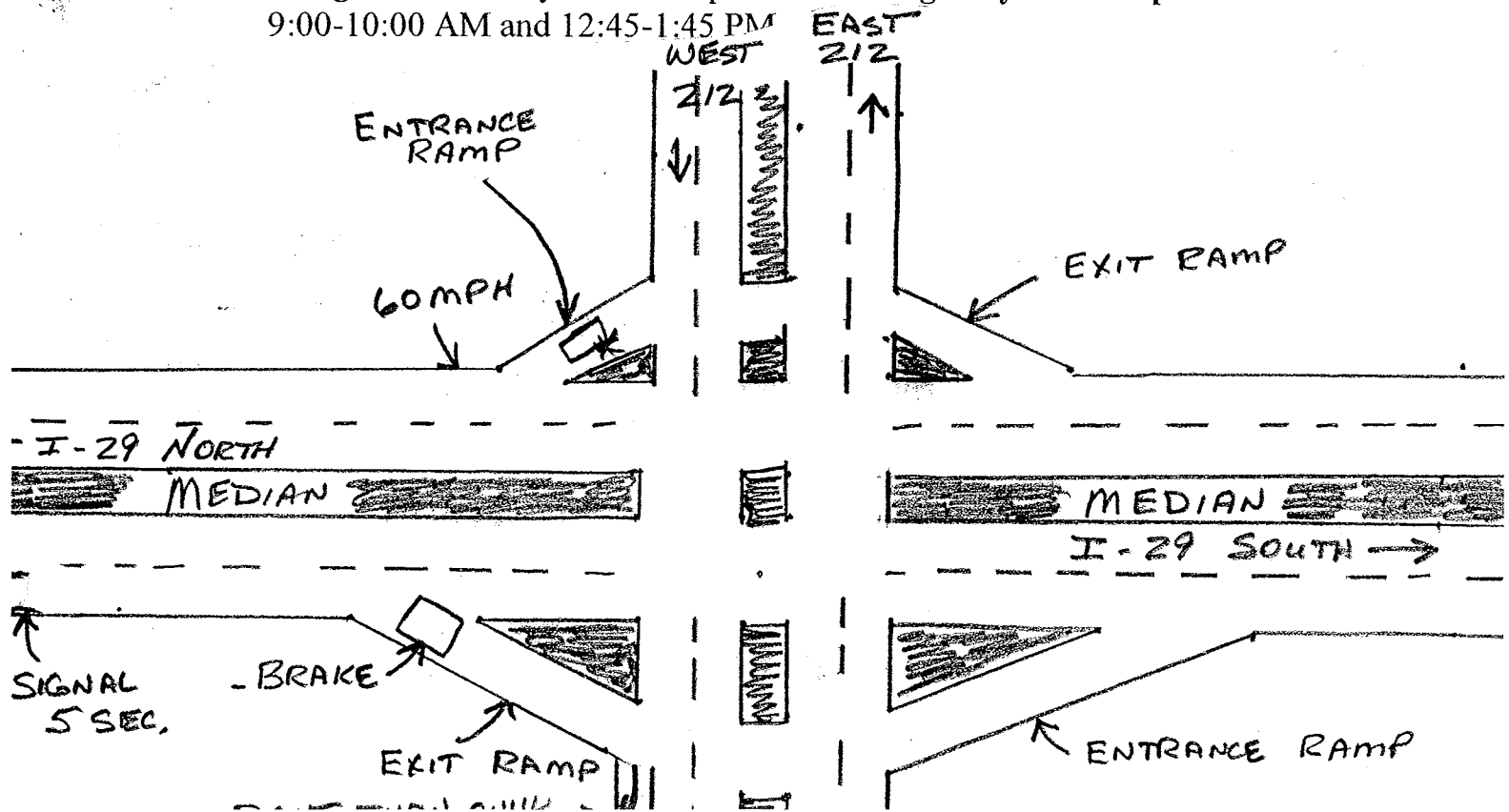
1. In-car Day # 6 – Lake Road (10 min.)
 - a. Speed limits 25, 30, 35, 45 (residential Hw. 20); 55 (Hwy 20 going to lake) advisory speed limits around the lake
 - b. Situations to be looking for – hills (restricted vision), curves, pedestrians, boat trailers, campers, pets, & animals
 - c. Acceleration lane at 14th & Hwy 20, and also at the exit ramp from the airport
 - d. Left turning lanes at 14th & 10th Avenues when you return from the lake
2. Activity Chapter 7 “Negotiating Intersections” (30 min.)
NOTE: Inform students of the pedestrian in the crosswalk on page 7 upper right hand corner intersection
3. Review Chapter 7 (15 min.)
4. Exam Chapter 7 (20 min.)
5. Break (15 min.)
6. Video # 4 “When the Sun Sets” (15 min.)
7. Quiz on video # 4 (10 min.)
8. Video “Kids & Air Bags” (5 min.)
9. Hand out SD Driver Manuals
 - a. Have each row write 5 questions as follows: (10 min.)
 - 1) Row 1, pages 1-12
 - 2) Row 2, pages 13-24
 - 3) Row 3, pages 25-36
 - 4) Row 4, pages 37-48
 - 5) Row 5 pages 49-62
 - b. Have each student ask one question to other rows except their own row (20 min.)
10. Assignment for Day # 6 is read Chapter 9 “Driving in Urban Traffic”

CLASSROOM DAY # 6

1. In-car Day # 7 – Addresses – explain streets and avenues (25 min.)
 - a. Kemp Ave. & Broadway divide the city into 4 quadrants
 - b. Streets run north & south and avenues run east & west
 - c. Houses are odd numbered on one side and even on the other side
 - d. House #'s increase by 100 as you go away from Kemp & Broadway
 - e. Remember that you must still concentrate on driving skills
 - f. Have students take turns writing an “X” on the board to indicate a house number
2. Activity Chapter 9 “Driving In Urban Traffic” (30 min.)
3. Review activity (15 min.)
4. Exam Chapter 9 (15 min.)
5. Break (15 min.)
6. Video # 6 “On the Freeway” (15 min.)
7. Quiz on Video # 6 (10 min.)
8. Video “No Zones” (20 min.)
9. Assignment for Day # 7 read Chapter 10 “Driving In Rural Areas”
10. Change tires on Day # 7 Morning class time 10:30 AM – 10:55 AM
Afternoon class time 2:10 PM – 2:35 PM
****WEAR APPROPRIATE CLOTHING

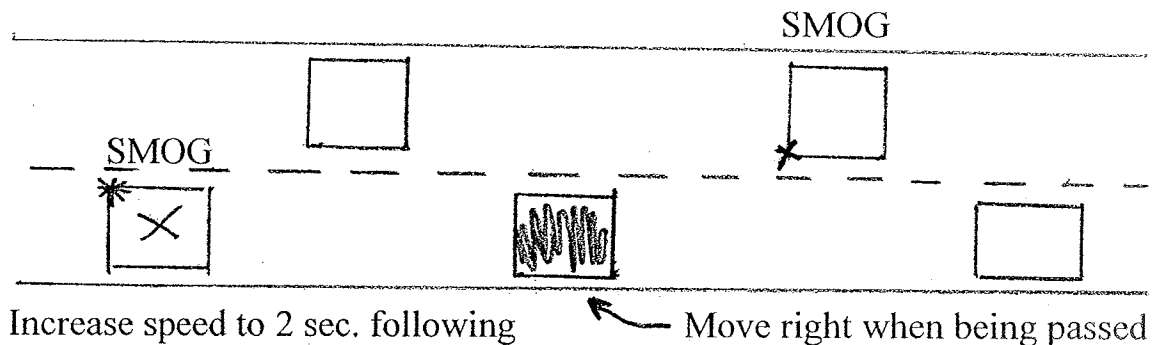
CLASSROOM DAY # 7

1. In-car Day # 8 – Interstate driving, gravel roads, 212, I-29, entrance & exit Ramps, rumble strips, speed limit (40 mph minimum & 75 max.), cruise control, (set, reset, slow, accelerate, disconnect with the brake), emergency flashers, rural roads (gravel, meeting vehicles, hills, farm equipment, & animals)
2. Chapter 10 Activity (25 min.)
3. Review Chapter 10 Activity Note: #23 A – Check the situation so that you don't cause more harm
4. Exam Chapter 10 (15 min.)
5. Break (15 min.)
6. Change tires (**morning 10:30-10:55; afternoon 2:10-2:35**) (30 min.)
Divide students amongst their driver instructor
Check or show fluid levels (oil, coolant, windshield, washer, auto. trans., brake fluid, & battery)
7. Video Street Skills "The car" (15 min.)
8. Hand out final driver exam route and review grading (5 min.)
9. Assignment for Day # 8 is Chapter 11 and **Highway Patrol Speaker**
9:00-10:00 AM and 12:45-1:45 PM



CLASSROOM DAY # 8

1. Speaker SD HWY Patrol 9:00-10:00 AM & 12:45-3:15 PM – Sobriety tests, PBT, alcohol related offenses under age 21 (.02 BAC); (.08 BAC) July, 2002 for age 21 or older; Seat belt – primary offense for age 17 and under; secondary offense for drivers 18 and older; move over law (\$94 moving violation) (60 min.)
2. In-car Day # 9 Passing – (10 min.)
 - a. Move over slightly while being passed
 - b. Passing gear
 - c. Pass within 15 seconds
 - d. Allow gap for passing (over ½ mile on a two lane highway)
 - e. Check traffic ahead and behind
 - f. Pass only if vehicle is traveling 10 MPH slower than speed limit
 - g. No passing within 700'-1,000' before crest of a hill, within 100' of RR, bridge, intersection, underpass, curves etc.
 - h. Describe the various interchanges – trumpet, diamond, & clover leaf *PP. 212-223*



3. Activity Chapter 11 (30 min.)
4. Exam Chapter 11 (15 min.)
5. Break (15 min.)
6. SD Work Zone video (8 min.)
7. Assignment for Day # 9 – Chapter 12

CLASSROOM DAY # 9

1. In-car Day # 10 Parallel Parking (10 min.)
 - a. Signal and tap brake to alert other drivers of your intention
 - b. Drive up parallel to the car in front 2-3' away & align rear bumpers
 - c. Shift to reverse (white back up lights)
 - d. Begin turning wheels toward the curb (2 turns or all the way)
 - e. Straighten wheels (2 turns) when "**driver**" is aligned with rear bumper
 - f. Turn wheels away from the curb when your car clears rear bumper
 - g. Align car in the center of the parking space
 - h. To exit (SMOG)
2. Chapter 12 Activity "Driving in Adverse Conditions" (30 min.)
3. Review Chapter 12 (15 min.)
4. Exam Chapter 12 (15 min.)
5. Break (15 min.)
6. To determine a cars speed when on the interstate – divide the number of seconds it takes to travel one mile into 3600 - *** Bonus question
7. Video "When the Pavements Slick" (15 min.)
8. Quiz video # 5 (10 min.)
9. Chapter 13 Activity "Handling Emergencies" (25 min.)
10. Review Chapter 13 activity (15 min.)
11. Assignment for Day # 10 is Chapter 14 "Effects of Driver Condition"

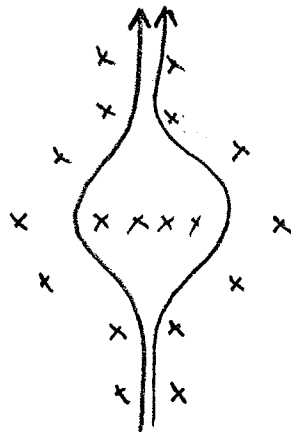
CLASSROOM DAY # 10

1. In-car Day # 11 – Evasive maneuvers, braking and controlled steering, and serpentine

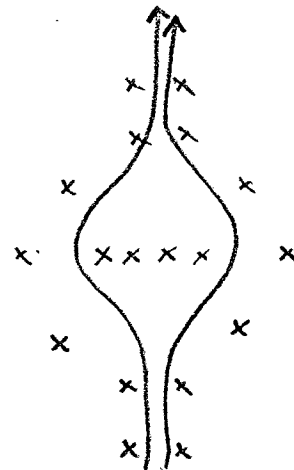
SERPENTINE
(cones 5 stalls
apart)



**BRAKING AND
CONTROLLED
STEERING**



EVASIVE MANEUVERS
(no braking)



2. Demonstrate testing stations (reaction time, depth perception, and peripheral vision). Group students in groups of 6 – 2 per station and rotate clockwise. Teacher stays at the reaction time station.
3. Chapter 14 Activity – “Effects of Driver Condition” (students rotate through the 3 stations while completing the activity (30 min.))
4. Review Chapter 14 Activity (15 min.)
5. Exam Chapter 14 (15 min.)
6. Video “In Control”
7. Video – Street Skills “The Road”
8. Assignment for Day # 11 – Chapter 16 plus insurance speaker
**** Check coverage on family insurance policy (liability or full & rates)

CLASSROOM DAY # 11

1. Introduce Insurance Speaker – 9:00-10:00 AM & 12:45-1:45 PM (60 min.)
2. In-car Day # 12
 - a. Final driving test – Dr. Inst. Will arrange times – one student per test
 - b. Review driver expectations – up & downhill parking, angle parking, turning onto one-way streets, lane changing, and right & left turns
 - c. Go over the two forms used for testing
3. Chapter 16 Activity “Buying and Owning a Vehicle” & Activity 1 & 2 (Complete activity # 2 together) (30 min.)
4. Review Chapter 16 Activity (15 min.) (**Explain insurance thoroughly**)
5. Exam Chapter 16 (15 min.)
6. Break (15 min.)
7. Video “Street Smarts” (15 min.)
8. Assignment for Day # 12 is Chapter 17 (no exam)
 - a. Final exam with 100 points (50 questions)
 - b. Bring book to class for return

*****TOTAL POINTS IN GRADE BOOK DURING THE VIDEO

**** **CALL DEALERS TODAY ABOUT RETURNING VEHICLES
BETWEEN 4:30 – 5:00 PM**

CLASSROOM DAY # 12

1. In-car Day # 12 – Final Test Review (students be waiting out front)
2. Final Exam - # 20 cross out some & change to SD; cross out interstate
46 motorcycles should increase following distance (30 min.)
3. Chapter 17 activity “Maintaining Your Vehicle” (30 min.)
4. Review Chapter 17 activity (15 min.)
5. Collect books
6. Chapter 18 SD map activity (20 min.)
7. Review SD map activity & return SD maps (10 min.)
8. Video “Drive It Right” DVD or “Teen Driver” (20 min.)
9. Review requirements at the Dr. Exam Station – National Guard Armory
 - a. Parent
 - b. Original certified copy of birth certificate – Obtained at Register of Deeds
 - c. Social Security Card
 - d. \$8:00
 - e. Corrective lenses if needed
 - f. DE Certificate of Completion
 - g. Encourage students to sign up as donors
9. For auto insurance discount purposes contact the secretary at the principal’s Office, do not contact a driver instructor.
10. Passing forms may be picked up at the principal’s office tomorrow after 8:30 AM
11. Review grading – must score 80% on final and 80% in the classroom
 - must score 80% on final drive
 - must retake the part that is lower than 80% and you will not get the 90 day waiver
12. Copy of students grades to the principal’s office
13. Driver instructors alphabetize student forms for the principal’s secretary

IN-CAR LESSON PLAN

DAY # 1

1. Review instrument panel – see attached listing
2. Preparing to drive
 - a. key
 - b. adjust seat
 - c. adjust mirror
 - d. adjust seat belt
3. Starting the engine and putting the car in motion
 - a. Use the starting device (turn key)
 - b. Press brake pedal and shift to desired gear & release parking brake
 - c. Signal – **SMOG**
 - d. Check mirrors
 - e. Look over your shoulder to check blind spot
 - f. Go (pull out)
4. Parking next to a curb
 - a. Signal 1/3 block in advance
 - b. Park within 9"-12" from the curb (DE may park 12-18" from curb)
 - c. Shift to park and set parking brake
5. Right turns
 - a. Signal ½ block in advance
 - b. Position car 5' from the curb
 - c. Begin turning when car's front of bumper gets to the curblines
 - d. Make the turn 5-8 MPH
 - e. Accelerate half way through the turn
6. Left turns
 - a. Signal ½ block in advance
 - b. Position left side of car near the center of the street
 - c. Begin turning just before car's bumper reaches the center of the intersection
 - d. Make turn 10-12 MPH
 - e. Accelerate half way through the turn
7. Driving and backing through cones – cones 4 stalls apart using hand over hand steering
8. Backing straight – place right arm over back of seat with left hand at 12 o'clock – keep looking forward and backward

INSTRUMENTS, CONTROLS, & DEVICES

INDICATORS

- Odometer
- Fuel
- Heat
- Oil
- Speedometer
- Alternator
- High/low beam
- Transmission

VISIBILITY

- Sun visor
- Mirror ... Day or night
- Outside mirror
- Washer/wiper
- Rear defogger

COMMUNICATION

- Horn
- Brake lights
- Turn signals
- 4 Way-flasher

HEATER/AIR CONDITIONER

- Fan ... On/off
- Heat/defrost
- Temperature
- Air conditioner
- Vent
- Bi/level

DOORS & WINDOWS

- Electric Windows
- Electric door locks

LIGHTS

- Parking lights
- Head lights
- Dim/bright
- Interior
- Instrument

RADIO

- On/off
- AM/FM
- Tune manually without looking
- Tape
- Push button

TRANSMISSION

- Start – N or P
- Drive, L1, L2
- Cruise control
- 4-wheel drive

SEATS AND RESTRAINTS

- Head restraint
- lap/shoulder belt
- Front seat latch
- Power seat
- manual seat
- Recline

STEERING

- Adjustable steering column

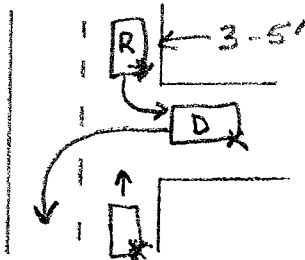
DAY # 2

1. Review

- Parking next to a curb
- Left and right turns (use quick glance technique)
- Blind intersections (when you can't see 150' in both directions at the crosswalk – slow to 15 mph)
- Stop behind STOP sign or crosswalk whichever comes first

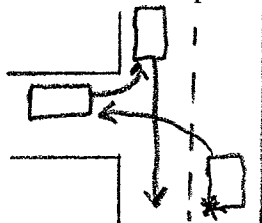
2. Two point turnabout (driveway on the right) (500' clearance needed)

- Signal 1/2 block in advance
- Stop with rear bumper just beyond the driveway & 3-5' from the curb
- Caution – make sure path is clear to back up
- Back car completely off the street into the center of the driveway
- Shift to drive, signal for left turn, check traffic, and pull out when clear



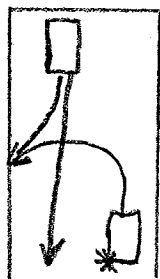
3. Two point turnabout (driveway on the left) (500' clearance needed)

- Signal 1/2 block in advance and drive into the right side of driveway
- Shift to reverse and back into the nearest lane (turn as soon as the rear bumper is even with the curb)
- Back until car is parallel with the curb & counter steer 2 turns to straighten the wheels
- Shift to drive and proceed when clear



4. Three point turnabout on dead end street or road

- Check traffic for 500' of clearance
- Signal for left turn & turn sharply toward the left curb
- Shift to reverse & turn steering wheel to the right as you back
- Shift to drive and proceed when clear



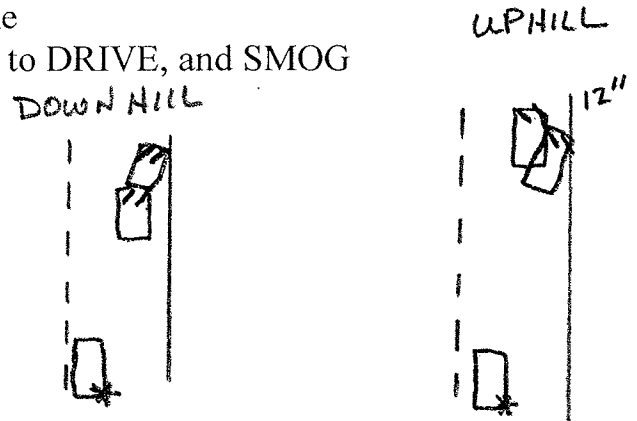
DAY # 3

1. Review

- Left and right turns
- Brake control – ease off brake before coming to complete stop
- Railroad crossing – **ALWAYS LOOK BOTH WAYS**

2. Uphill parking with a curb

- Signal ½ block in advance
- Pull over 12' from the curb
- Shift to NEUTRAL & turn wheels sharply left or away from the curb
- Let wheels roll back to touch the curb
- Shift to PARK and set parking brake
- To exit, release parking brake, shift to DRIVE, and SMOG



3. Downhill parking with a curb

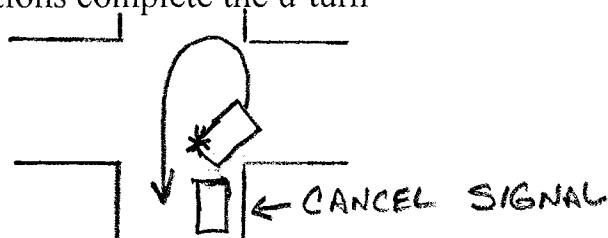
- Signal ½ block in advance
- Pull over to within 12' of the curb
- Shift to NEUTRAL & turn wheels sharply right or toward the curb
- Let wheels roll to touch the curb
- Shift to PARK and set parking brake
- To pull out, release parking brake, shift to REVERSE and back out 3-5' to straighten car – turn steering wheel 2 turns right or away from the curb to straighten wheels
- Shift to DRIVE and SMOG

4. Starting an automatic transmission vehicle on a hill using parking brake and/or without parking brake

- With parking brake – accelerate slightly until engine pulls & release brake
- Without parking brake – with left foot on the brake, accelerate gently with the right foot

5. U-turns (illegal at controlled intersections)

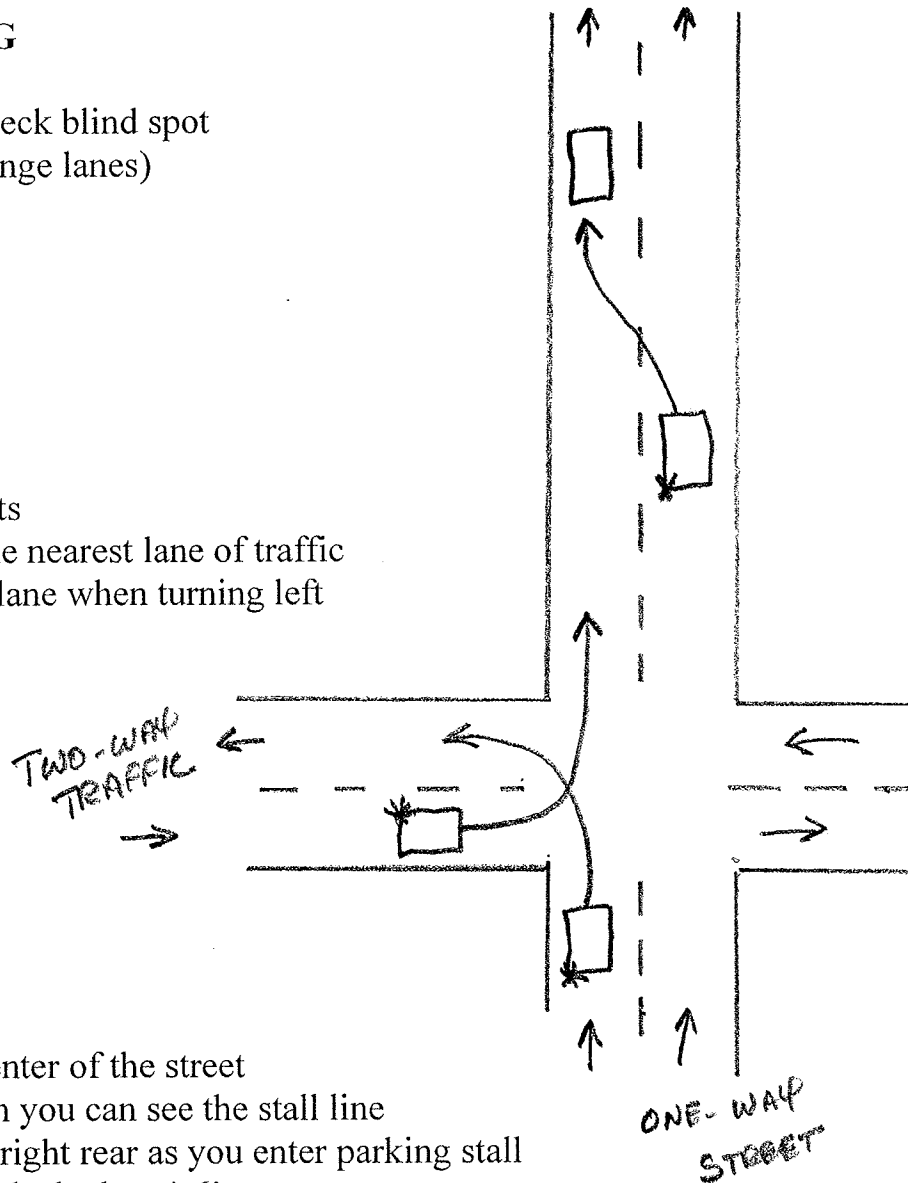
- Signal & pull over near intersection 5' from the curb
- Check 500' clearance in all directions (1 block)
- Begin a right turn ½ way through the turn, signal left, while checking traffic in all directions complete the u-turn



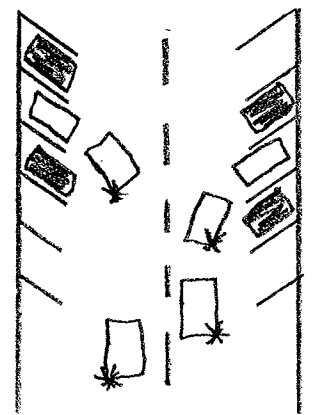
DAY # 4

1. Lane changing
 - a. Change lanes at the beginning off the block –**never at an intersection**
 - b. Use **touch tone** with both hands on the steering wheel, turn on the signal by using one finger of the left hand to depress the signal 1/2”
 - c. Check traffic
 - d. Signal **SMOG**
 - e. Check mirrors
 - f. Look over shoulder to check blind spot
 - g. Go (accelerate as you change lanes)

2. Driving on one-way streets
 - a. Always turn into the nearest lane of traffic
 - b. Must be in the left lane when turning left



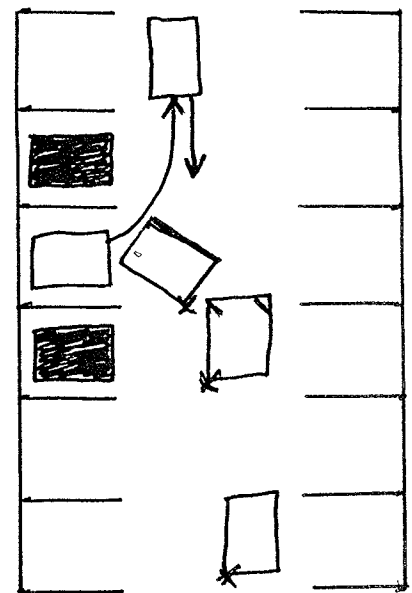
3. Angle parking
 - a. Signal in advance
 - b. Stay close to the center of the street
 - c. Begin turning when you can see the stall line
 - d. Watch left front & right rear as you enter parking stall
 - e. Straighten the wheels the last 4-6'
 - f. Shift to REVERSE & check traffic before backing
 - g. Watch left front and right rear as you exit
 - h. Back out until parallel with the curb or centerline
 - i. Shift to DRIVE and proceed



DAY # 5

1. Review
 - a. Angle parking
 - b. Lane changing (touch tone)
 - c. One-way streets (business district)

2. Perpendicular parking (on the left to facilitate traffic flow into lot)
 - a. Signal
 - b. Stay to the right as far as possible
 - c. Begin turning when your front bumper passes rear taillight of the vehicle to the right of the empty space
 - d. Keep right front bumper close to the car on the right until over $\frac{1}{2}$ way into the stall then straighten wheels to center the vehicle
 - e. To exit, shift to REVERSE
 - f. Check traffic. Watch left front bumper and right rear fender as you back. Back out until parallel
 - g. Straighten wheels, shift to DRIVE, and exit



3. Perpendicular parking lots
 - a. Senior High parking lot
 - b. Lot south of Wells Fargo on Maple Street
 - c. Lot east of Broadway on First Ave. N.
 - d. Strip Mall lots
 - e. County Fair
 - f. Target parking lot
 - g. New Event Center

DAY # 6

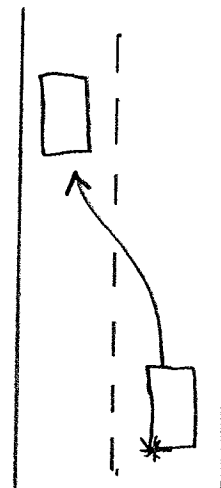
1. Lake Kampeska Drive

- a. Speed limits
 - 1) Hwy 20 toward the lake – 55 MPH
 - 2) Hwy 20 along the north side of the lake – 45 MPH
 - 3) South Lake Drive – 25 MPH
 - 4) North Lake Drive/SD Hwy 139 – 40 MPH
- b. Acceleration lane at 14th Ave. N. and left turn lane on Hwy 20 turning left onto 14th Ave. N.
- c. Left turn lanes at the airport entrance and exit
- d. Right turn from South Lake Drive on to Hwy 20 – traffic should stay in the inside/left lane – white line, but no guarantee
- e. Advisory speed limits
- f. Conditions to be on the alert for when driving around the lake
 - 1) Vehicles exiting from residences
 - 2) Hills and curves
 - 3) Pedestrians, bicyclists, and pets
 - 4) Campers and boat trailers
 - 5) Garbage trucks and mail vehicles
 - 6) Wildlife

2. Lane change

- a. Check traffic ahead and behind
- b. Signal (touch tone)
- c. Mirrors (check rear view mirrors)
- d. Over the shoulder (check blind spot)
- e. Go (change lanes)

SMOG



DAY # 7

TIRE CHANGE

10:30 AM --- 10:55 AM

2:10 PM ----- 2:35 PM

1. Review

- a. Uphill parking
- b. Downhill parking
- c. Angle parking
- d. Lane changing
- e. Encourage use of Jensen Ave. when going to the mall

Check fluid levels (oil, coolant, & windshield washer fluid)

2. Adresses

- a. Kemp Ave. and Broadway divides the city into four quadrants
- b. Streets run north & south
- c. Avenues run east and west
- d. House #'s are odd on one side and even on the other side
- e. House #'s increase by 100 as you go away from Kemp & Broadway

3. House numbers

AVENUES – NE

726, 917, 920, 1003 – 1st Ave. NE

511 – 3rd Ave. NE

217 – 4th Ave. NE

500, 702, 704, 813 – 7th Ave. NE

AVENUES – SE

603, 708, 817 – 1st Ave. SE

214, 402, 810, 923 – 2nd Ave. SE

321 – 3rd Ave. SE

316, 613, 619 – 4th Ave. SE

821, 916 – 4th Ave. SE

915 – 5th Ave. SE

STREETS – NE

413, 423, 510, 612 – 2nd St. NE

802, 824, 808, 824, 916 – 2nd St. NE

511, 513, 615, 623, 810 – 6th St. NE

613, 617, 731, 817 – 7th St. NE

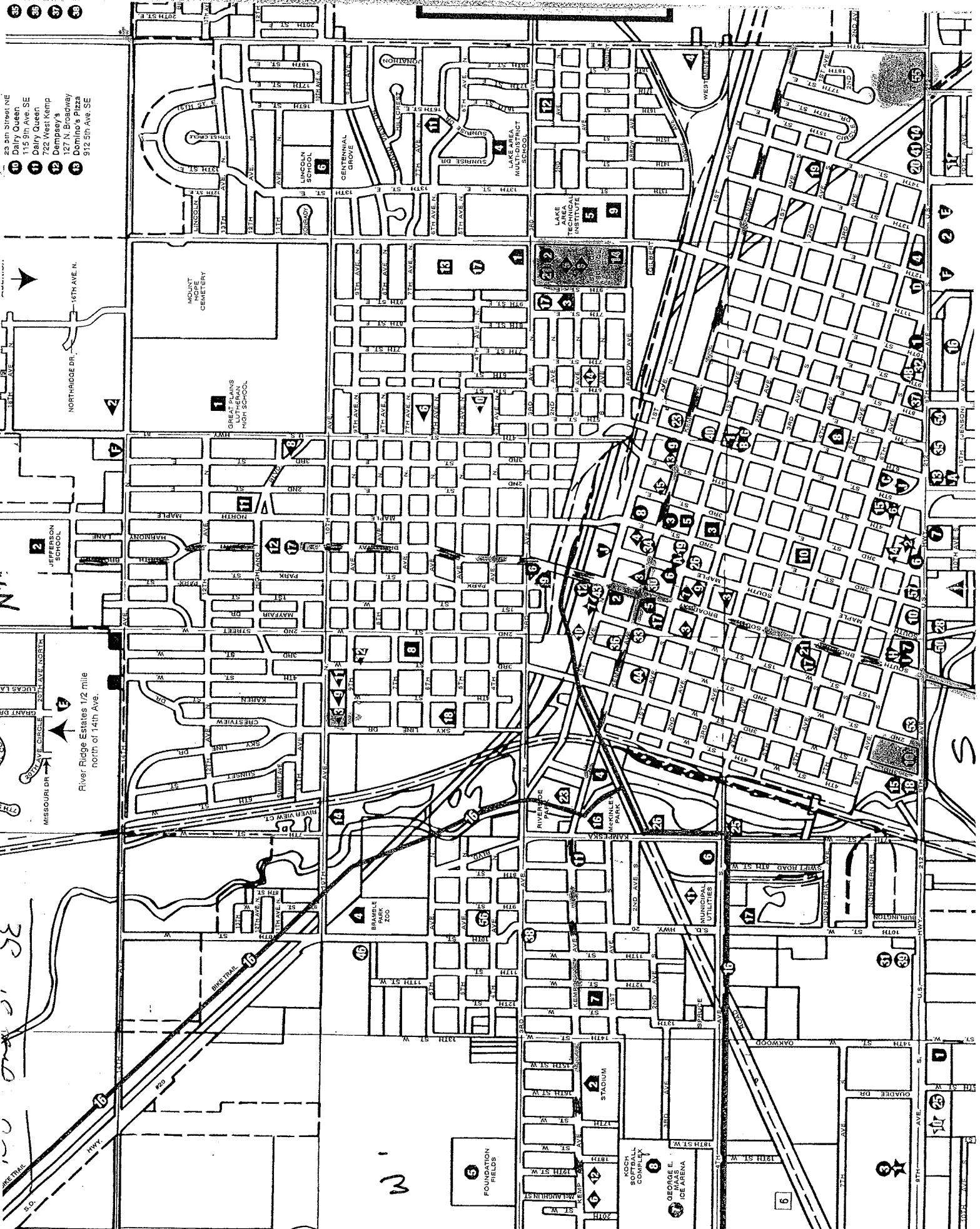
341, 343, 345 – 9th St. NE

STREETS – SE

326, 510, 616 – 6th St. SE

17, 110, 204, 312 – 8th St. SE

- 25 5th Street NE
- Dairy Queen
- 115 5th Ave. SE
- Dairy Queen
- 722 West Kemp
- Dempsey 3
- 127 N. Broadway
- Domino's Pizza
- 912 5th Ave. SE



N7

N

Missouri Dr
 Lucas Ln
 River Ridge Estates 1/2 mile north of 14th Ave.

Highway 16
 Highway 20

- 25 5th Street NE
- Dairy Queen
- 115 5th Ave. SE
- Dairy Queen
- 722 West Kemp
- Dempsey 3
- 127 N. Broadway
- Domino's Pizza
- 912 5th Ave. SE

DAY # 8

1. Interstate Driving

a. Entrance ramp

- 1) Choose an entrance ramp
- 2) Look for a gap
- 3) Signal intention to merge
- 4) Adjust speed to the flow of traffic (approximately 60 MPH)
- 5) Merge
- 6) Cancel signal and adjust to speed of traffic

b. Exit ramp

- 1) Signal to exit 5 seconds in advance or when you see the exit sign
- 2) Begin to slow down on the deceleration or exit ramp (**don't slow down on the interstate**)
- 3) Signal and car position at the intersection

c. Emergency braking on gravel

d. Rumble strips

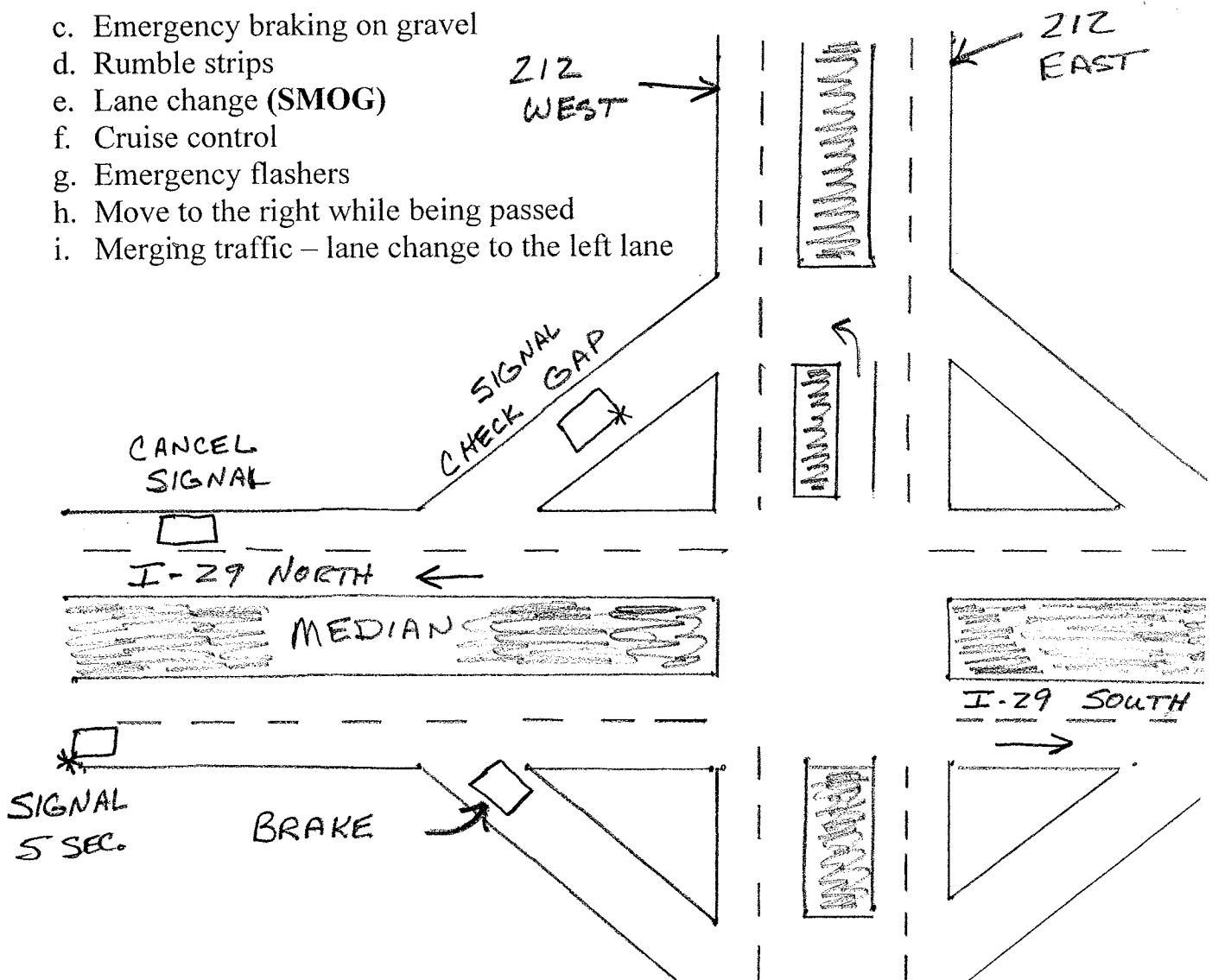
e. Lane change (SMOG)

f. Cruise control

g. Emergency flashers

h. Move to the right while being passed

i. Merging traffic – lane change to the left lane



DAY # 9

1. Review Interstate Driving
 - a. Entrance and exit ramps
 - b. Cruise control
 - c. Emergency flashers

2. Passing
 - a. Check traffic in front and back
 - b. Increase speed and close to within 2 sec. following distance
 - c. Signal, check mirrors, look over shoulder, and go (SMOG)
 - d. OPTIONAL – honk about 10-15' behind car
 - e. Maintain speed and stay in your lane as you pass
 - f. Check rear view mirror for cars headlights
 - g. Signal, mirrors, over shoulder, and change lanes (SMOG)

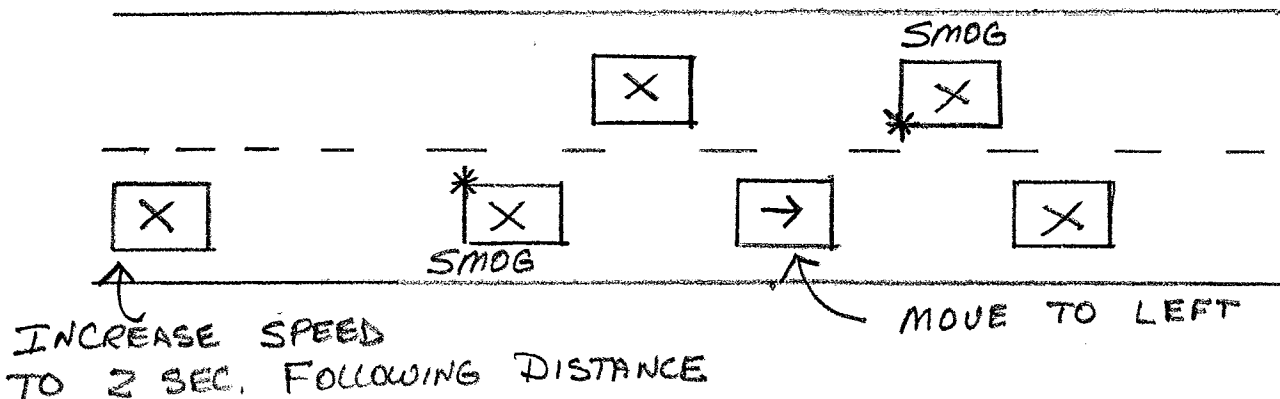
NOTE: Car being passed will travel between 53-55 MPH

3. Checking actual blind spot

To allow students to check actual blind spot while being passed, the teacher will hold the wheel while the student looks in the rear view mirrors as the car enters the blind spot

4. Additional Passing Guidelines

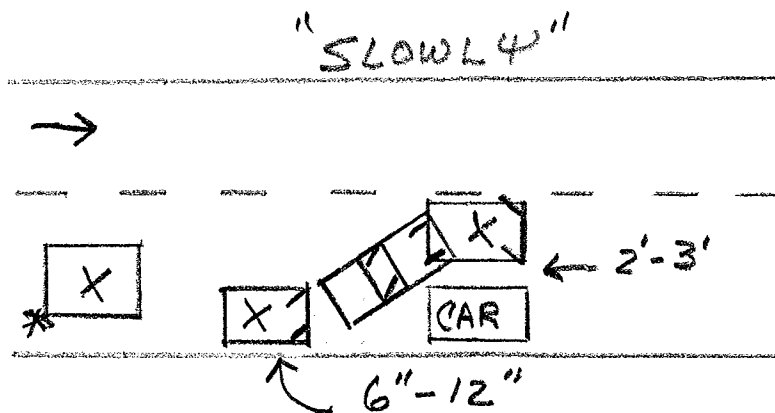
- a. Move to the right fog line while being passed
- b. Should be able to pass within 15 seconds
- c. On a highway with two-way traffic allow more than ½ mile to pass safely



DAY # 10

1. Review
 - a. Angle parking
 - b. Perpendicular parking
 - c. Driving one-way streets

2. Parallel Parking (space on the right)
 - a. Signal 1/3 block ahead
 - b. Line up your rear bumper 2-3' along side the car in front of your space
 - c. Shift to reverse
 - d. Turn your steering wheel right 2 turns
 - e. Back up slowly until the back of your car's seat or your body is lined up with the car's rear bumper
 - f. Straighten your wheels by turning left 2 turns
 - g. Turn left sharply when your front bumper clears and slowly back into your parking space
 - h. To exit, shift to drive, signal, look over your shoulder, and exit when the traffic clears (**SMOG**)



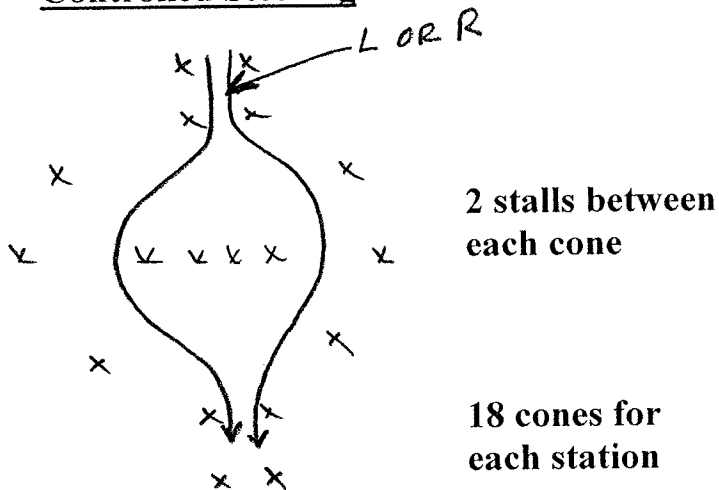
DAY # 11

1. Review
 - a. Uphill and downhill parking
 - b. Angle parking
 - c. Driving one-way streets

2. Evasive maneuvers
 - a. Controlled steering
 - b. Controlled steering and braking
 - c. Serpentine

EVASIVE MAUEUVERS (senior high parking lot)

Controlled Steering



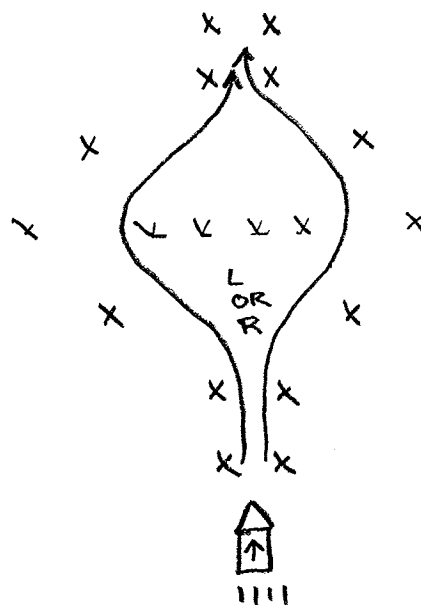
Serpentine



Arena

5 stalls between cones
Line up cones in the
middle of parking stalls

Braking and controlled steering



DAY # 12

1. Final Drive (copy of route included)

a. Examiners Evaluation Form (copy included)

1) Grading scale as follows

A+ -- 98-100%	B+ -- 89-91%	C+ -- 81-83 %	D+ -- 73-75%
A ---- 95-97%	B ---- 86-88%	C ---- 78-80%	D ---- 70-72%
A- --- 92-94%	B- ---84-85%	C- --- 76-77%	D- --- 68-69%

2) **Minus 10 points for grade and automatic failure for the 90 day waiver** for failure to:

- a) Stop sign or light
- b) Right of way (vehicle or pedestrian)
- c) Traffic violation
- d) Speeding

b. Driver Education Certificate of Completion (copy included)

- 1) Stamp SD seal for students with 80% passing score for classroom and /or in-car

c. Watertown Driver Ed. Final Grade Letter of Completion (copy included)

- 1) Record classroom, in-car, and final grade
- 2) Sign and date

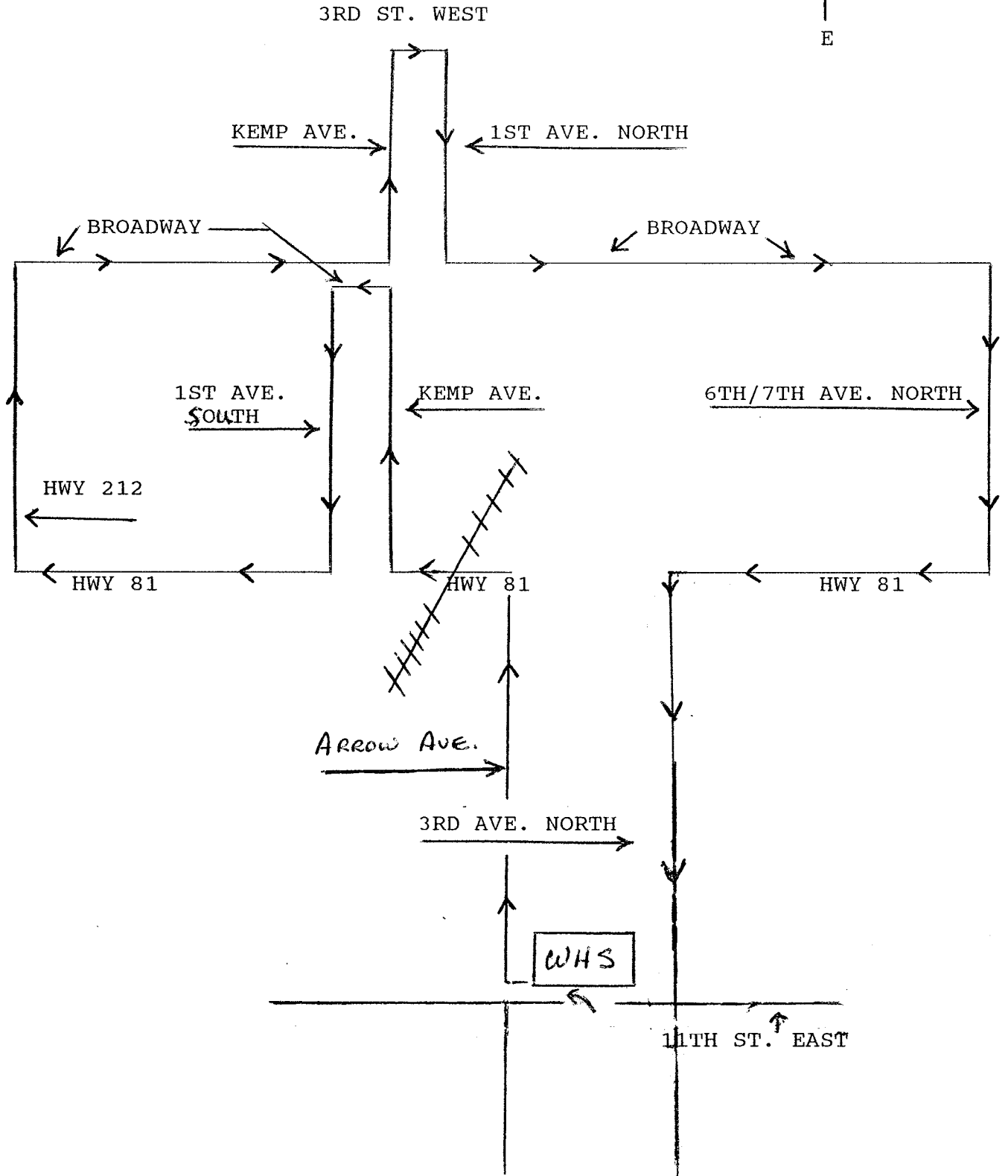
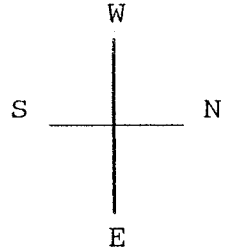
2. Grading

- a. Record % of final driving exam
- b. Record final in-car grade
- c. Combine in-car and classroom grade for final grade

3. Student Copies

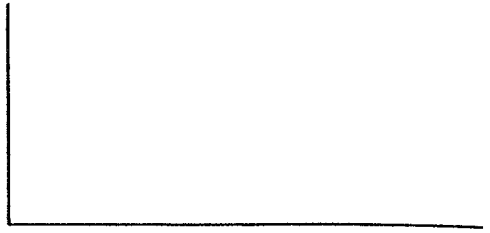
- a. Driver Education Certificate of Completion
- b. Watertown Driver Education Final Grade Letter of Completion
- c. SD Examiners Form (Final drive score sheet)
- d. Parent-teen Driving Agreement

FINAL DRIVING EXAM ROUTE



/ EXAMINERS USE ONLY

Name _____ DL # _____



TRAFFIC DRIVING

NOTES AND DIAGRAMS

Starting	0	1	2	3
Judgment of Distance	0	1	2	3
Changing Lanes	0	1	2	3
Judge Intersection	0	1	2	3
Stop at Crosswalk	0	1	2	3
Correct Lane Position	0	1	2	3
Use of Clutch	0	1	2	3
Shifting Ability	0	1	2	3
Attention to Driving	0	1	2	3
Anticipates Problems	0	1	2	3
Stop Sign or Light				FAILURE
Right of Way (Veh)				FAILURE
Right of Way (Ped)				FAILURE
Traffic Violation				FAILURE
Speeding				FAILURE

- 10 POINTS EACH

TURNS

RIGHT TURNS

Lane Position	0	1	2	3
Speed	0	1	2	3
Enter Proper Lane	0	1	2	3
Signal	0	1	2	3

LEFT TURNS

Lane Position	0	1	2	3
Speed	0	1	2	3
Enter Proper Lane	0	1	2	3
Signal	0	1	2	3

SKILL TEST

Emergency Stop	0	1	2	3
Backing	0	1	2	3
Use of Brakes	0	1	2	3
Parking on Hill	0	1	2	3
Stop on Grade	0	1	2	3
Start on Grade	0	1	2	3
General Car Control	0	1	4	7

12 A+ 98-100
11 A 95-97
10 A- 92-94
9 B+ 89-91
8 B 86-88
7 B- 84-85
6 C+ 81-83
5 C 78-80
4 C- 76-77
3 D+ 73-75
2 D 70-72
1 D- 68-69

DATE		SIGNATURE		SCORE
		EXAMINER/DR. ED. INSTRUCTOR		
	P	F		
	P	F		
	P	F		



DEPARTMENT OF
COMMERCE AND REGULATION

OFFICE OF DRIVER LICENSING
118 W. CAPITOL
PIERRE, SOUTH DAKOTA 57501 (605) 773-6883

DRIVER EDUCATION CERTIFICATE OF COMPLETION

This form is to certify that _____, a student in the _____ Driver Education Program, has successfully completed a program approved by the Department of Education & Cultural Affairs with a passing score of 80% or higher in the written and/or the drive portions of the class.

Upon successful completion of the course, the Office of Driver Licensing will waive the appropriate testing. This certificate will be valid for one year from the date of signature to waive testing at the exam station. If this certificate verifies successful completion of both the written and the drive portions of the class, per South Dakota Codified Law 32-12-12, the Instruction Permit will only need to be held a minimum of 90 days instead of the 180 day requirement of the Graduated Licensing System.

Written Coursework	Drive Experience/Test
I certify that the above mentioned student has successfully completed the written portion of the class with a score of 80% or higher.	I certify that the above mentioned student has successfully completed the drive portion of the class with a score of 80% or higher.
YES <input type="checkbox"/> NO <input type="checkbox"/>	YES <input type="checkbox"/> NO <input type="checkbox"/>
Driver License Stamp Affixed Here	Driver License Stamp Affixed Here
Instructor's Name _____ (Please Print)	
Driver Education Instructor Signature _____ Date _____	Driver Education Instructor Signature _____ Date _____

If the written portion of this certificate is checked "YES", is signed, dated and stamped, the student driver may bring this certificate to the State Driver Exam Station to waive the written test and obtain the Instruction Permit. The start time for the 180-day requirement of the Instruction Permit (90 days upon successful completion of driver education) will begin the day the permit is issued at the exam station.

Both the written and drive portions of this certificate must be checked "YES", be signed, dated, and stamped in order for the student driver under 18 years of age to waive 90 days of the 180-day Instruction Permit required by law.

This certificate is the only form that will be accepted by the State Driver Exam Station to waive testing and a portion of the Instruction Permit requirement.

WATERTOWN DRIVER EDUCATION

Date: _____

Dear Parents:

_____ recently participated in the classroom and driving phase of our two-part driver education course. Our driver education course consists of thirty (30) hours of classroom instruction and six (6) hours behind the wheel instruction.

Successful completion of the course is indicated upon receiving credit. A letter grade of A, B, C, D, is assigned indicative of the student's competence.

The time spent behind the wheel has given your child a sound background in the fundamentals of driving safety. It has NOT necessarily produced a skillful, polished driver. **For all new drivers, a parent or 18 year old licensed driver must accompany your child for 180 days (90 days for students who pass both the classroom and in-car instruction with a score of 80%).** Do let your child drive as often as possible with you, being sure the necessary skills have been attained and you feel at ease with him/her behind the wheel.

The skills circled below are the areas of driving in which your child needs additional practice:

- | | |
|--------------------------------|--|
| 1. backing | 8. night driving (not offered) |
| 2. steering (straight & turns) | 9. angle and parallel parking |
| 3. highway driving | 10. parking on hills |
| 4. interstate driving | 11. perpendicular parking |
| 5. downtown driving | 12. driving one-way streets |
| 6. yielding to traffic | 13. adjusting speed to conditions |
| 7. entering traffic | 14. lane changing |
| | 15. recognition and avoidance of driving hazards |

_____ received credit and earned the following grade:

classroom _____ **in-car** _____ **final** _____.

We sincerely hope that you will help your child continue practicing the skills, habits, and judgments needed for a lifetime of safe driving.

Sincerely,

Driver Education Instructor

PARENT-TEEN DRIVING AGREEMENT

Graduated licensing laws in South Dakota put restrictions on inexperienced drivers. As drivers gain experience, they earn additional privileges. As a parent, you also can add protective guidelines through a Parent-Teen Driving Agreement. A contract communicates that driving is a privilege that your family takes seriously.

It's important that parents and teens share a clear understanding of expectations and consequences. Putting expectations and consequences in writing helps parents enforce standards consistently. To make this contract meaningful, it's important that you do not allow your teen to drive independently until the agreement is signed. As your new driver demonstrates good driving habits and good judgment over time, specific points in the contract may be renegotiated.

GENERAL RULES

Our family agrees that our teen won't drive at night between the hours of **10:00 PM to 6:00 AM until the age of 16**. After our teen obtains a license he/she must drive with a parent for **90 days** if the entire driver education course was passed with a **score of 80%**. If the course was passed with a lesser score, then my teen must drive with a parent for a minimum of 180 days.

I WILL:

- wear my safety belt at all times;
- require that every passenger wear a safety belt;
- always obey traffic laws and drive at or below the speed limit.

I WILL NOT:

- drive under the influence of alcohol or other drugs or be a passenger with someone who is;
- allow alcohol or other drugs, or weapons in the car;
- allow anyone else to drive the car;
- allow passengers, other than parents, until that privilege is given by my parents.

PARENTAL COMMITMENTS

- we will provide and maintain a safe vehicle;
- we will be available to ride with you to fulfill your graduated licensing requirements;
- as your passenger, we will share observations and coaching in a calm, respectful manner;
- we will be there when you need us to give you safe transportation home, regardless of the situation or time of your call;
- we will be role models and lead by example.

LOSS OF PRIVILEGES

We jointly agree that a citation for speeding in excess of 10 mph over, the suspension shall be _____ days. For all other traffic violations, the suspension shall be _____ days. Any at fault accident resulting in \$500 damage or more shall result in a suspension of _____ days.

Teen _____

Parent _____